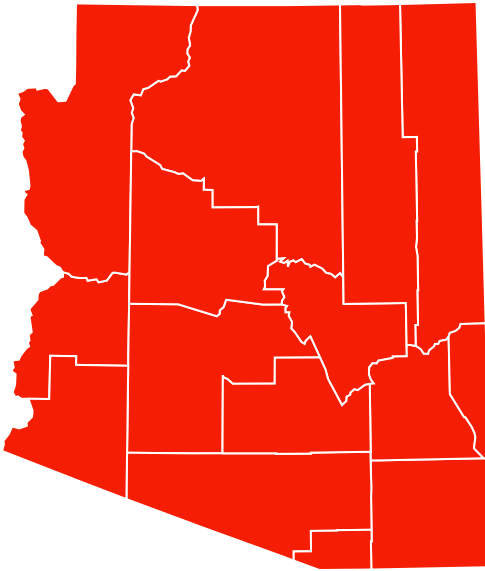


ARIZONA

COVID-19 GUIDANCE AND INFORMATION

Guidelines may differ among Arizona Counties

*If your county falls in two transmission levels, it is recommended to abide by the higher recommendation. Please continue to follow any guidance as proposed by your individual counties as well as CDC guidance.



High Transmission CDC Guidance

10% > test positivity rate

For those areas that fall in the "High Transmission" category the CDC recommends the following:

- Universal Mask wearing indoors for both unvaccinated and vaccinated individuals
- Counties/Cities should consider other significant measures to limit exposure
- Limit contact and continue stringent social distancing measures

Substantial Transmission CDC Guidance

8-9% > test positivity rate

For those areas that fall in the "Substantial Transmission" category the CDC recommends the following:

- Should wear mask indoors whether vaccinated or not
- Everyday activities should be limited to reduce spread

Moderate Transmission CDC Guidance

5-8% > test positivity rate

For those areas that fall in the "Moderate Transmission" category the CDC recommends the following:

- Should wear mask indoors whether vaccinated or not
- Everyday activities should be limited to reduce spread

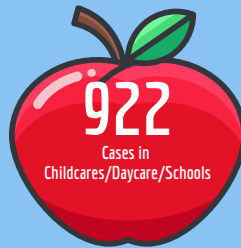
Arizona Counties with the Highest COVID Counts

(updated as of 9/9/21)



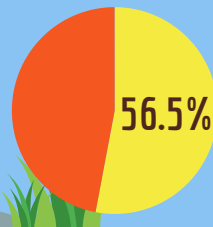
Reported COVID-19 Cases in Arizona Child Care Facilities

(updated as of 9/9/21)

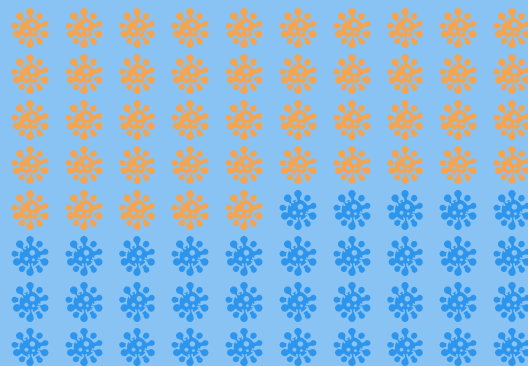


Each Arizona County Health Department may have differing guidance depending on community transmission. Continue to stay up to date with your county PHD to ensure you are following recommendations specific to your county as well as other state and CDC recommendations.

of Arizonans fully vaccinated
(updated as of 9/9/21)



Reported Daily Arizona COVID-19 cases



2,907
(14 Day Average)
(updated as of 9/9/21)

7,438,314
Vaccinations Initiated
* not all completed
(updated as of 9/9/21)

RESOURCES:

- For daily updates on current CDC guidance and COVID-19: <https://www.cdc.gov/coronavirus/2019-ncov/community/schools-childcare/guidance-for-childcare.html>
- For Community Care Licensing for Arizona, please visit: <https://www.azdhs.gov/licensing/childcare-facilities/index.php>
- Arizona COVID-19 Childcare Guidance Letter: <https://www.azdhs.gov/documents/licensing/childcare-facilities/covid-19-childcare-guidance-letter.pdf>
- Grantee Staff and Family Scholarships and Grants for Returning to care/work: <https://des.az.gov/services/child-and-family/child-care/grants-scholarships-program>
- Face Covering and COVID-19 Guidance: <https://www.azdhs.gov/documents/licensing/childcare-facilities/covid-face-covering-faq.pdf>



Head Start Regional TTA Network

These materials were developed for OHS/Region IX Training and Technical Assistance Network under Contract No. HHSP140D0420C0089 by STG International