

HAWAI'I

COVID-19 GUIDANCE AND INFORMATION

Guidelines may differ among Hawaiian Islands

*If your county falls in two transmission levels, it is recommended to abide by the higher recommendation. Please continue to follow any guidance as proposed by your individual counties as well as CDC guidance.

High Transmission CDC Guidance

10% > test positivity rate

For those areas that fall in the "High Transmission" category the CDC recommends the following:

- Universal Mask wearing indoors for both unvaccinated and vaccinated individuals
- Counties/Cities should consider other significant measures to limit exposure
- Limit contact and continue stringent social distancing measures

Substantial Transmission CDC Guidance

8-9% > test positivity rate

For those areas that fall in the "Substantial Transmission" category the CDC recommends the following:

- Should wear mask indoors whether vaccinated or not
- Everyday activities should be limited to reduce spread

Moderate Transmission CDC Guidance

5-8% > test positivity rate

For those areas that fall in the "Moderate Transmission" category the CDC recommends the following:

- Should wear mask indoors whether vaccinated or not
- Everyday activities should be limited to reduce spread

- High
- Substantial
- Moderate
- Low

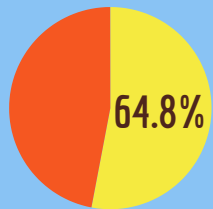


Reported COVID-19 Cases across Hawai'i Islands

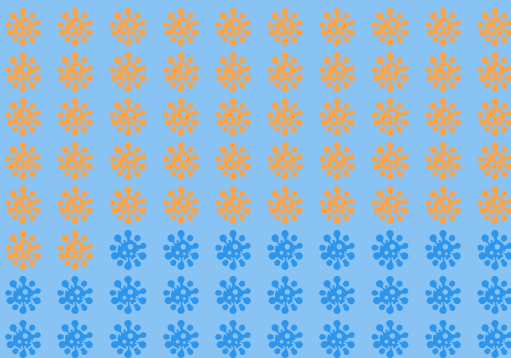
(updated as of 9/8/21)



of Hawai'i populations fully vaccinated
(updated as of 9/9/21)



Reported Daily Hawai'i COVID-19 Cases



Hawai'i COVID statistics

Positivity rate range from 4.9% to 9.6% across the islands

Weekly cases for those ages 0-17 years old have increased significantly from October 2020 to August 2021

On average, there are 300 cases weekly of COVID for children 0-17 years old

RESOURCES:

For daily updates on current CDC guidance and COVID-19: <https://covid19.ca.gov/state-dashboard/>
 Hawai'i Child Care Licensing Unit Contact Information: <https://humanservices.hawaii.gov/wp-content/uploads/2020/02/Statewide-Child-Care-Licensing-Units-02-2020.pdf>
 Hawai'i Guidelines for Childcare Facilities: <https://humanservices.hawaii.gov/wp-content/uploads/2020/06/Guidelines-for-Child-Care-Facilities-2020-06-09-final.pdf>
https://humanservices.hawaii.gov/wp-content/uploads/2020/10/FAQs_Guidelines-for-Child-Care-Facilities-10-28-20.pdf



Head Start Regional TTA Network

These materials were developed for OHS/Region IX Training and Technical Assistance Network under Contract No. HHSP140D0420C0089 by STG International